



CLOUD MONITORING MODULE SETUP GUIDE



Contents

Account Setup	2
Physical Setup	5
The 4 Requirements	5
Downloading the CMM Software	5
CMM366A-WIFI	6
CMM366A/B-3G/4G	9
CMM366A-ET	10
Communication Methods	10
RS232	10
RS485	11
USB	11
LINK	11
Genset Cloud App	11
Adding a Genset	12
TMT ID/IMEI	12
Genset No.	13
Settings when adding a genset	13
Monitoring your gensets	15
Controlling your Gensets	19
How to find your Control Code	20
Genset Cloud on Desktop/PC	21

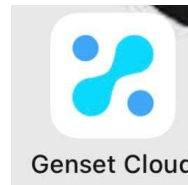
SETUP

Account Setup

The first step is creating your cloud monitoring account. The account setup must be done on the mobile phone application. To download the application, follow these steps:

Apple iPhone:

- Open the App Store.
- Search “Genset Cloud”.
- Download the application.



Note: When launching the iPhone app there is a common issue which causes all the text to read in Chinese. By simply closing and reopening the app fixes this issue.

Android:

- Open your camera (only newer phones have this feature) or download a QR scanner.
- Scan the following code:



- Allow the application to download.
- After the download completes you will need to allow the application to install on your phone (the application is safe).

Once the application has been successfully downloaded you should see a screen that looks like this:


Login

Email or Phone number

Password

Login

Vcode login Forgot password

 Facebook Login

Read & Agree all terms and conditions before login
[Service Agreement](#) and [Privacy Policy](#)
[Find more details of Genset Cloud app and Manual](#)

In order to create a new account press “Vcode login”:


Login

Email or Phone number

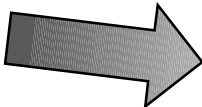
Password

Login

Vcode login Forgot password

 Facebook Login


Read & Agree all terms and conditions before login
[Service Agreement](#) and [Privacy Policy](#)
[Find more details of Genset Cloud app and Manual](#)



Once on this screen you can enter your information in as I have. Your email address, the image verification as you see on your screen. At this stage ensure you have accepted the terms and conditions found underneath the “Facebook Login” prompt. Finally press “Get Code”, this will send an email with a 4-digit code to the email address you entered. You only have 60 seconds to enter the code, so a good internet connection is required. When all the fields are filled in, press “Login”.

Login


sla@genexpress.co.za

3928 

[Get Code](#)

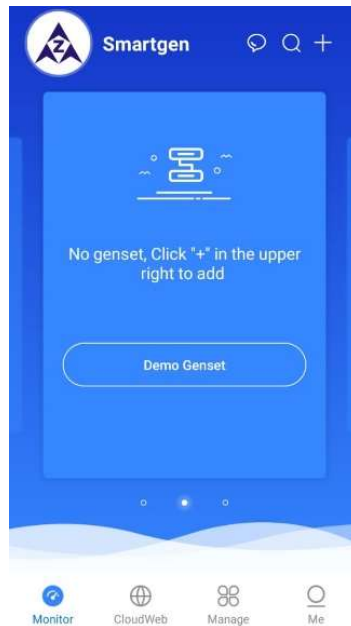
Login

Password Login

 Facebook Login

Read & Agree all terms and conditions before login
[Service Agreement and Privacy Policy](#)
[Find more details of Genset Cloud app and Manual](#)

Once you have logged in successfully you should see the following on your screen:



Locate the “Me” tab at the bottom right of your screen and press on it. From here go to “Account Security” then “Change Password” then fill in all the necessary fields. Again, an email will be sent with a 4-digit code valid for 60 seconds. When complete you will automatically be taken to the login screen. Ensure you have pressed “Password Login”, so the app only asks you for your email address and password.

At this stage you will need to contact us at Auto Comms & Control to give you superior permissions which will allow you to control and monitor your gensets. Simply send us the email address and password you used to create your Genset Cloud account via WhatsApp on **(+27) 84 268 3693** or emailed to **sla@genexpress.co.za**.

Physical Setup

The 4 Requirements

In order for the CMM unit to function correctly it needs the following:

- DC Power (12V-24V)
- Generator Controller
- Internet connectivity via: 3G/4G (SIM CARD); Wi-Fi; Ethernet.
- Communication between CMM and Controller via: RS232; RS485; USB; LINK.

Downloading the CMM Software

In order to program CMM units you need to download the software for your laptop. To do this follow these steps:

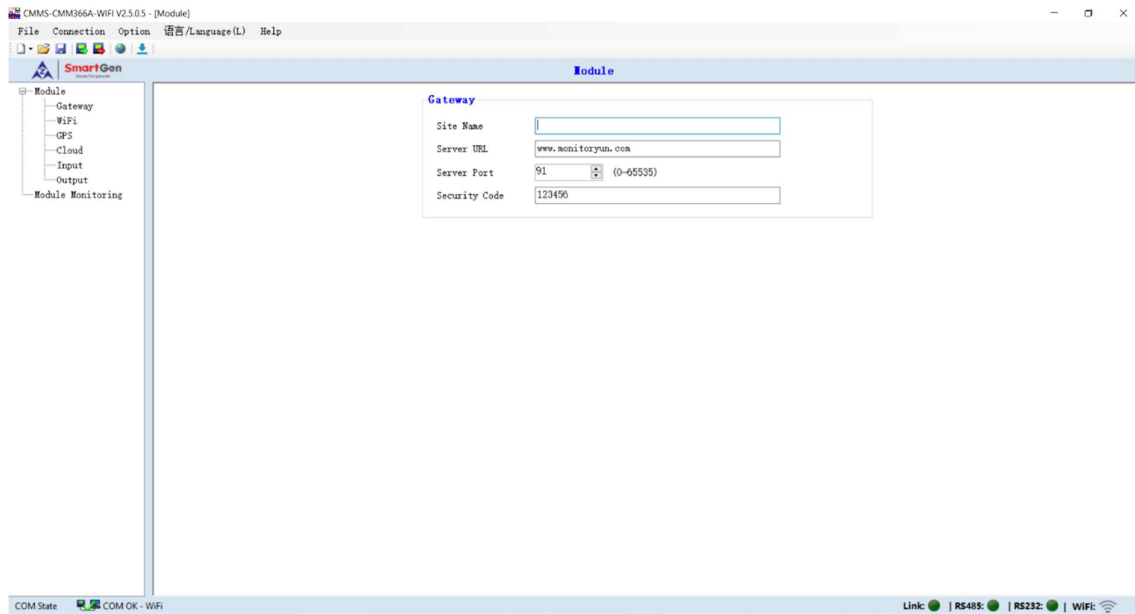
Go to your browser and type smartgen.cn. This will take you to the Smartgen website. Locate the “Download” tab at the top of your screen and click on it. From here you will need to scroll down to locate the “Cloud Monitoring Modem” tab. This will show you the various software available for all of the CMM units. Download the software for your respective CMM unit.

You will need an extractor program i.e.: 7zip, WinRAR, WinZip to open the software. When you have downloaded the software from the website, go to your “Downloads” tab in your file explorer on your laptop/PC then right-click on the file then click “Extract”. Once the files have been extracted, launch the application.

CMM366A-WIFI

In order to setup the WIFI CMM unit you will need to use the CMM366A-WIFI software (See page 5).

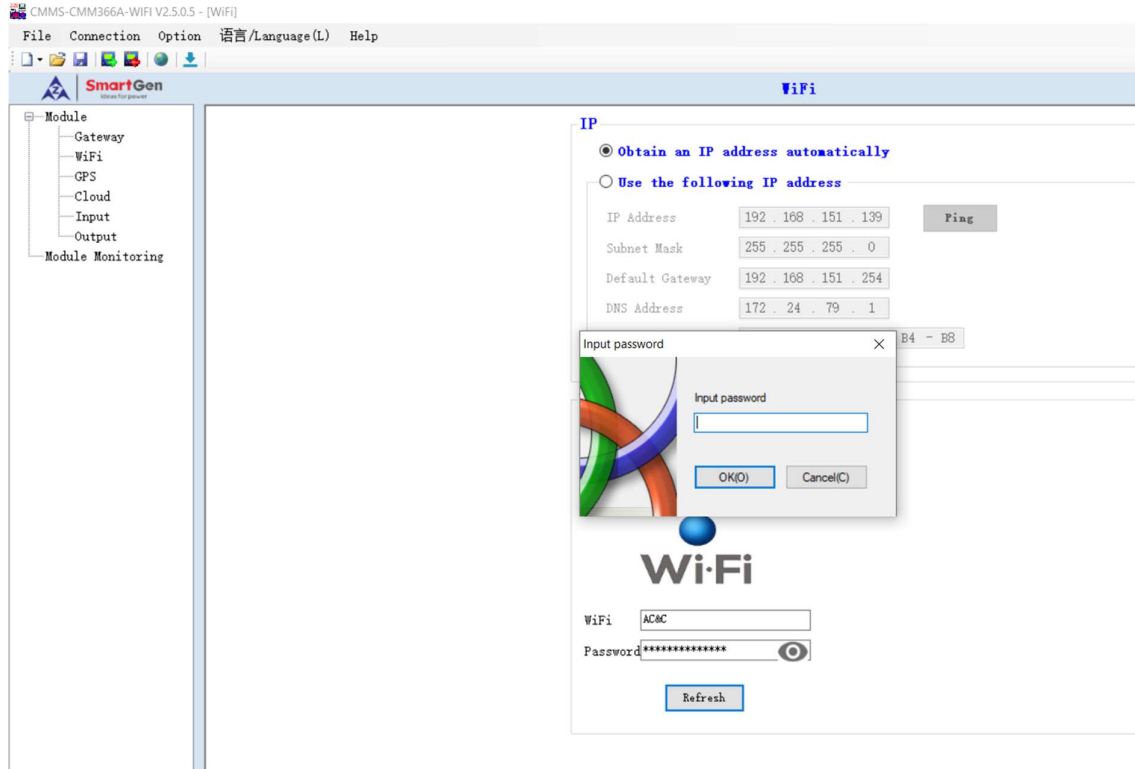
Once you have the CMM366A-WIFI software running you can plug the CMM unit into your laptop/PC using your printer USB cable. Ensure the antenna is connected to the CMM unit. Your screen should look like this:



Next you will need to read the current settings on the CMM unit by pressing the save icon with the green arrow:



Once it has finished reading go to the WIFI tab on the left of the screen. Then scroll to the bottom of the page where you will see the “Refresh” button. When you click on the Refresh button it will ask for a password. Leave the field blank and press “OK(0)”.



Once the “Input Password” prompt has disappeared click on the Refresh button again. You will then see all available WIFI networks appear.



When you see the network you want to connect to double click it. You will see the name of your network appear in the “WiFi” field. Input the password for the network in the “Password” field.

Next you will need to write the configuration to the CMM unit by pressing the save icon with the red arrow:



CMM366A/B-3G/4G

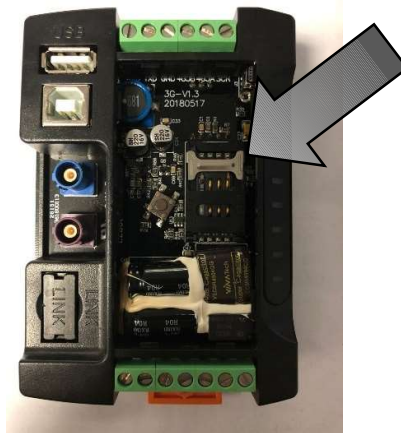
The primary difference between the CMM366A-4G and CMM366B-4G is that the **A** can pick up Edge(2G), 3G and 4G whereas the **B** ONLY connects to 4G. Be sure to purchase the CMM366B-4G when you are certain the area it will be installed has 4G available.

The CMM366A/B-3G/4G does not require you to install the CMM software to complete the setup.

To install the sim card, take a small flat screwdriver (a terminal screwdriver ideally) and gently pry open the cover on the front face as seen below:



Once open you will see the SIM Card bracket. To unlock the bracket simply slide the small metal lock down gently. You should then be able to lift the bracket once unlocked. Slide the SIM Card into the bracket ensuring that it is orientated correctly.



CMM366A-ET

The CMM366A-ET simply needs a direct ethernet connection. You will need to use the CMM software on your laptop/PC to ensure the unit is setup correctly.

Connect your CMM366A-ET into your laptop/PC using your printer USB cable. Once connected ensure to read the configuration of the unit *(as seen on page 6)*.

Next go to the “IP” tab on the left. Here you need to ensure the unit is setup to Obtain an IP Address Automatically as seen below:

IP

Obtain an IP address automatically

Use the following IP address

IP Address	<input type="text" value="192 . 168 . 151 . 139"/>	<input type="button" value="Ping"/>
Subnet Mask	<input type="text" value="255 . 255 . 255 . 0"/>	
Default Gateway	<input type="text" value="192 . 168 . 151 . 254"/>	
DNS Address	<input type="text" value="172 . 24 . 79 . 1"/>	

Communication Methods

RS232

RS232 simply needs 2 wires to communicate with the controller. When using RS232, you need the simple understanding that RX is the receiver and TX is the transmitter. This means that when we wire RS232, one of the sides of connection needs to be swapped in order to ensure that the RX on one side connects to the TX on the other side and vice versa. RS232 is however becoming obsolete hence we do not recommend using RS232.

RS485

RS485 is the most reliable form of communication. Each of our CMM units come with an RS485 cable, one side of the cable has 3 wires and the other side has 2 wires. When connecting with RS485 ensure the side with 3 wires is connected to the controller and the side with 2 wires connected to the CMM unit. Each CMM unit also comes with 2x 120Ω resistors. These resistors both need to be installed between the A(+) and B(-) on both the controller, and CMM sides. **Please note that not all controller models have RS485.**

USB

USB connection is very simply plug and play. There are 2 different types of USB cable that are used with CMM units, the printer cable and the micro-USB. The various controller models have different USB ports hence the reason for the different USB cables. We have noted that the controllers which use the micro-USB don't communicate correctly with the CMM units so in these cases use the RS485 port instead.

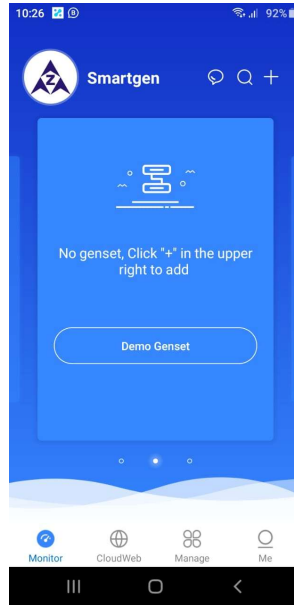
LINK

The LINK cable is simply plug and play. It isn't often used because most controllers don't have LINK ports.

Genset Cloud App

Once your CMM unit has been physically setup you can move on to adding the unit to your Genset Cloud App.

When you have your Genset Cloud app open, your screen should appear as follows:



Adding a Genset

Press the little plus(+) icon in the top right of your screen then “Add Genset”. You should be prompted with 2 options: “Enter TMT (CMM366A) ID” and “Enter Genset No.”

TMT ID/IMEI

The TMT ID/IMEI is the unique identification code used to add the genset to your Genset Cloud profile. The 20-digit ID is located on the left side of the CMM units:



Genset No.

The Genset No. is a single use number used to share and add gensets to more profiles. In order to share a Genset No. go into the generator profile you want to share then locate the little printer icon as seen below:



Settings when adding a genset

Setup your genset by pressing on the pen icon



Will join 众智云

TMT ID TMT ID (required) [QR icon] ← Enter TMT ID/IMEI.

Model Choose > ← Select CMM Model.

Genset eg. #1Genset

Save

Will join 众智云

TMT ID TMT ID (required) [QR icon]

Model CMM366A-4G >

Traffic Card No. Edit ← Leave Blank.

Start Date Choose > ← Not Important, any date will work.

Genset eg. #1Genset

Save

When you have saved these settings you will be asked to edit the genset profile:

Will join 众智云

Profile > ← To change name of genset.

Genset >

Engine >

Generator >

Location >

Controller > ← Important!

Save

Photo [Image] ← Editing genset's photo and name.

Genset CMM366A-WIF [QR icon]

Controller		Save
Brand	Smartgen	← Brand of Controller.
Series	HGM7X00	← Series of Controller.
Model	HGM7220N	← Model of Controller.
Serial Number	1	← Place Holder.
Manufacturer	1	← Place Holder.
Manufacture Date	2021-12-01	← Any Date.
Model ID	1	← Do Not Change!
Communication Port	USB	← Select communication method. (See page 9 & 10)
Baud Rate	9600	← Do Not Change!

Monitoring your gensets

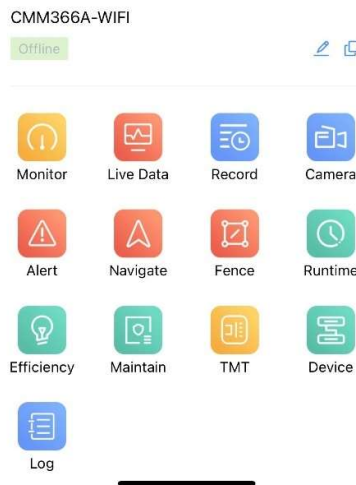
From the front page of the Genset Cloud app, press the blue circle in the middle of your screen as seen below:



Here you will see all of your generators and specifically what state they are in i.e.: Alert, Run, Stop and Offline. By pressing on each tab, you will see all of your gensets in the various states.

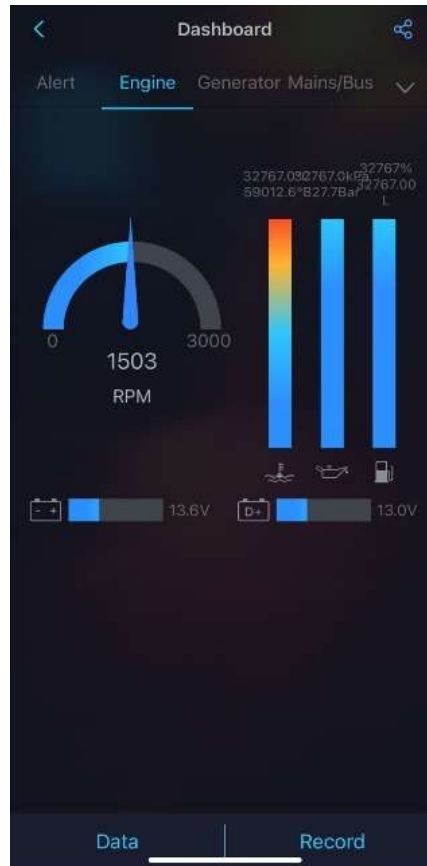
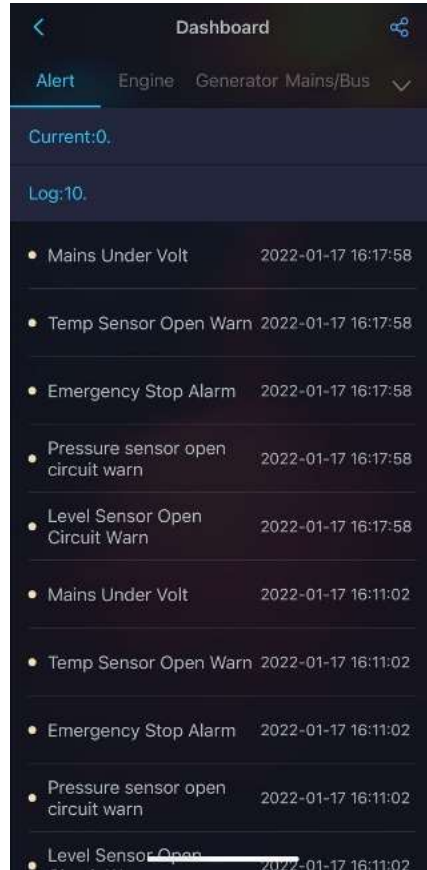


By pressing on one of your gensets, it will open the functions menu:



To control and monitor your genset press “Monitor”. This will take you to the “Engine” tab by default. Underneath “Dashboard” at the top of your screen you will see the tabs in order of: Alert; Engine; Generator; Mains/Bus; Controller.

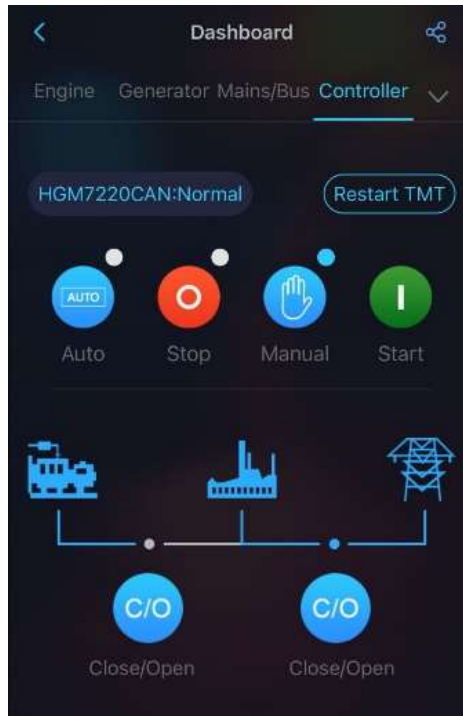




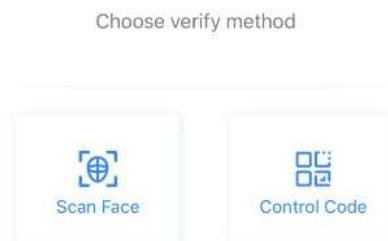


Controlling your Gensets

On the controller tab you will see the same buttons that you see on the front face of your controller. The standard functions on most controllers are: Auto; Manual; Stop; and Start. *Note: in order to start or stop the generator you must first select manual mode.*

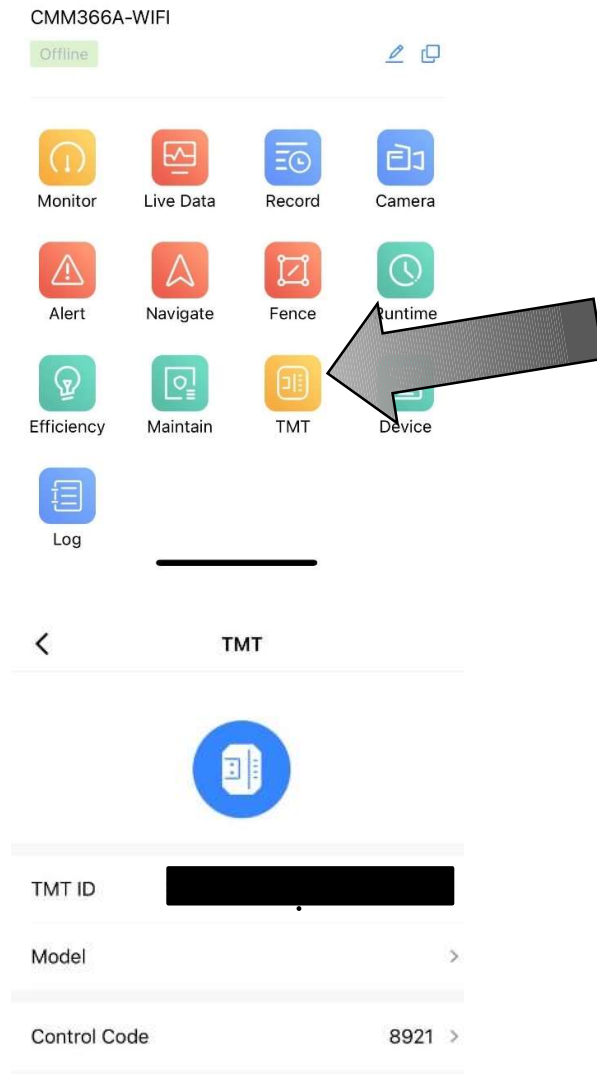


When you want to change the position of the controller, simply press the option on screen. You will then be prompted to use either “Scan Face” or “Control Code”. Select “Control Code” then type in the unique 4-digit number for your CMM unit.



How to find your Control Code

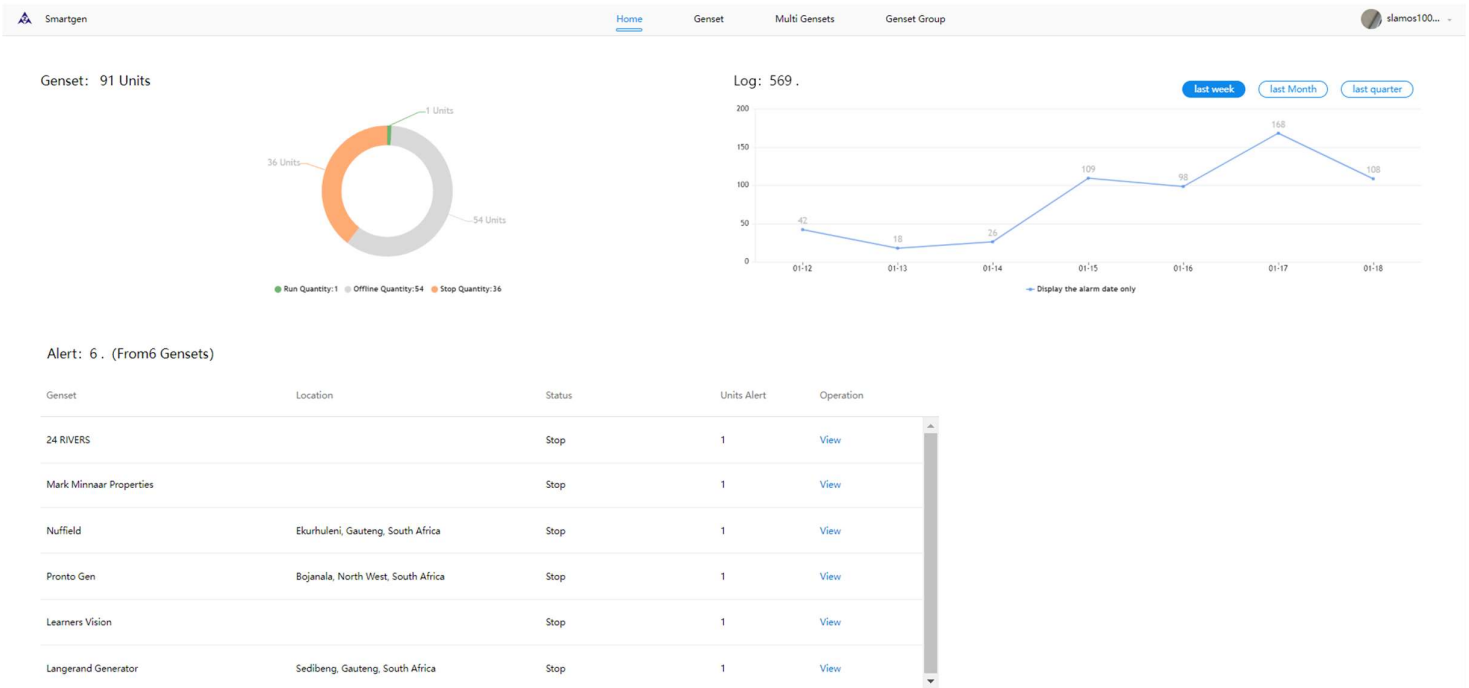
To get your genset's unique 4-digit Control Code simply press "TMT" on your genset menu. This will show you your CMM unit's TMT ID/IMEI and your Control Code.



Genset Cloud on Desktop/PC

To open the desktop/PC Genset Cloud either go to our website at <http://smartgen.cn/> then to “Cloud Monitoring Platform” or go directly at <http://www.smartgencloud.com/>.

Once you have logged in you will see the home page as per the image below:



To see your list of gensets click “Genset” at the top of your screen:

Total Gensets: 91 Units

Model	TMT ID	Status	Units Alert	Operation
HGM420N	[REDACTED]	Offline	0	Monitor Profile Copy
HGM7120N	[REDACTED]	Offline	0	Monitor Profile ParameterS Copy
HGM7220N	[REDACTED]	Offline	0	Monitor Profile ParameterS Copy
HGM420N	[REDACTED]	Stop	1	Monitor Profile Copy
HGM420N	[REDACTED]	Offline	0	Monitor Profile Copy
HGM420N	[REDACTED]	Offline	0	Monitor Profile Copy

To see a map showing all of your gensets and their locations, go to the “Genset” tab then “Genset Map”:

Smartgen Home **Genset** Multi Gensets Genset Group slamos100...

[Add Genset](#) [Genset Map](#) Classify - Q

Total Gensets: 91 Units

Genset	Model	Status	Units Alert	Operation
[REDACTED]	HGM420N	Offline	0	Monitor Profile Copy
[REDACTED]	HGM7120N	Offline	0	Monitor Profile ParameterS Copy
[REDACTED]	HGM7220N	Offline	0	Monitor Profile ParameterS Copy
[REDACTED]	HGM420N	Stop	1	Monitor Profile Copy
[REDACTED]	HGM420N	Offline	0	Monitor Profile Copy
[REDACTED]	HGM420N	Offline	0	Monitor Profile Copy

Genset Run Stop Offline Alert Refresh Google Map

Exit Map

Statistic by genset status: 36 (Running), 1 (Stop), 54 (Offline)

Statistic of alert genset: 85 (Offline), 5 (Alert)

To monitor and control your genset click on “Monitor” as seen below:

[Add Genset](#) [Genset Map](#) Sort - Classify - Q

Total Gensets: 91 Units

Genset	Model	TMT ID	Status	Units Alert	Op
[REDACTED]	HGM420N	[REDACTED]	Offline	0	Monitor Profile Copy

On this page you can control your genset the same way as on the mobile app. (See page 16)




To edit your genset profiles click "Profile" as seen below:

[Add Genset](#) [Genset Map](#)

Total Gensets: 91 Units

Genset	Model	TMT ID	Status	Units Alert	Operation
[REDACTED]	HGM420N	[REDACTED]	Offline	0	Monitor Profile Copy

View Profile Details [Back](#)



AC&C Wifi Test

TMT ID: [REDACTED]
Location: [Check Position](#)

Status: **Offline**

Units Alert: **0**

[Real-time Data](#)

[Edit Genset Profile](#)

Profile	Genset ID:	1	Model:	HGM9320MPU
	Rated Power:	1000kW	Brand:	
	Manufacturer:	Smartgen	Serial Number:	
	Manufacture Date:		Warranty Date:	
	Rated Speed:	1500r/min	Rated Volt:	380V
	Rated Freq.:	50Hz	Rated Current:	500A
	Rated battery voltage:	24V	Rated charging voltage:	24V
	Fuel Capacity Max:			